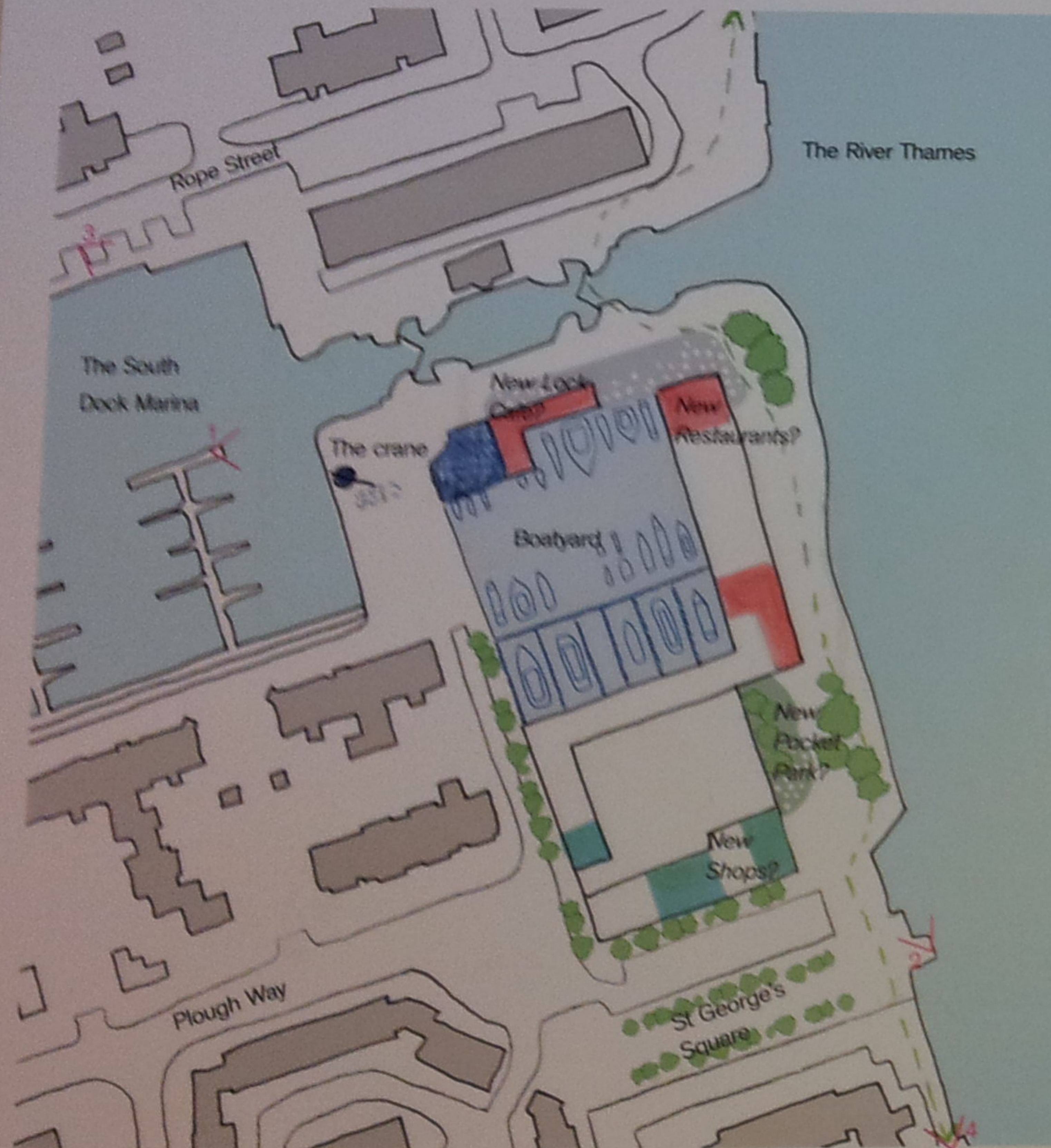


# Keeping the Boatyard and Improving Local Facilities



Ground Floor Plan

Boatyard facilities

Cafe & Restaurants

Retail

What could be possible here?

A vibrant active marina

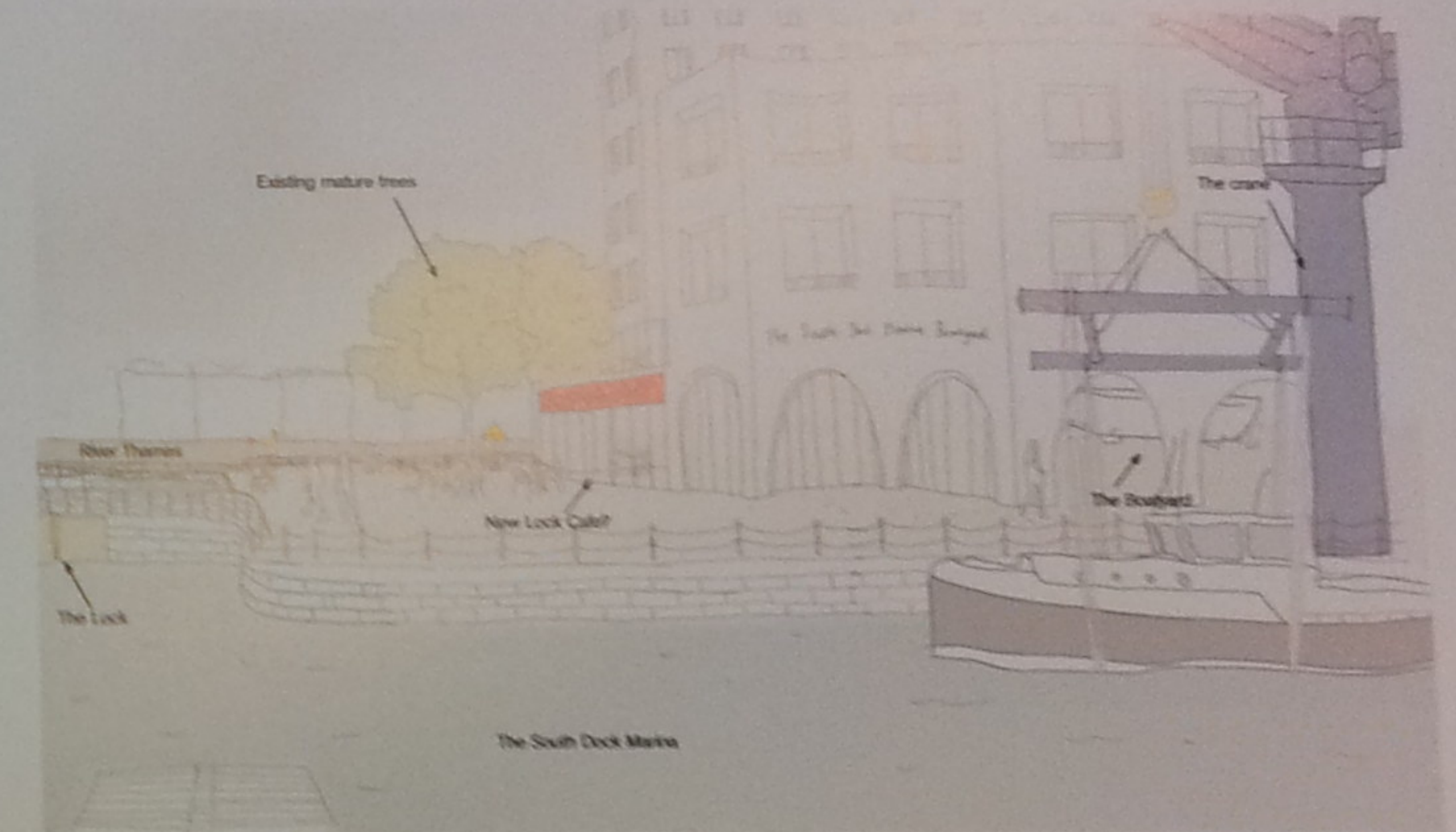
- with more local jobs
- a working boatyard,
- and increased vitality.

What is important to you?

- Upgraded marina facilities with direct access from the dockside?
- New cafes & restaurants with terraces on the lock and on the River Thames?
- New shops?
- A new pocket park on the River Thames with a playground?
- New workspaces for local people?



New workspaces above the boatyard



1: View of the new boatyard facilities seen from the Marina



2: View of the proposal and the Thames Path



New cafes by the River



New local shops



Improving the boatyard facilities



New pocket park & play

Do you like the proposals?

Would you like new cafes and restaurants?

Would you like to see new shops there?

Do you think a new pocket park is a good idea?

AGREE

NEUTRAL

DISAGREE

We are keen to hear what you think. Please tell us more in the questionnaire provided!

## South Dock Marina

Adam Khan Architects + East + Levitt Bernstein



Southwark  
Council

Date: 29/07/2015



# Providing High Quality New Homes



## What we are proposing?

- Potentially
- 213 new homes
  - Equal mix of council, intermediate and private homes
  - A mix of 1, 2, 3 & 4 bedroom flats
  - Height ranging from 8 to 15 & 20 storeys
  - Proportion of new homes will be for wheelchair users
  - Covered parking for 20 to 25 cars.
  - Provision of a car club.

## What the new homes will be like?

- High architectural quality
- Built to Lifetime Homes Standards
- Low maintenance
- Highly insulated

## The new homes will also have:

- Safe entrances
- Good views for everyone
- Private outdoor space
- Shared gardens
- Doorstep play.



View of the proposal from the River Thames



Designed flats with plenty of light and natural ventilation



Generous private external space

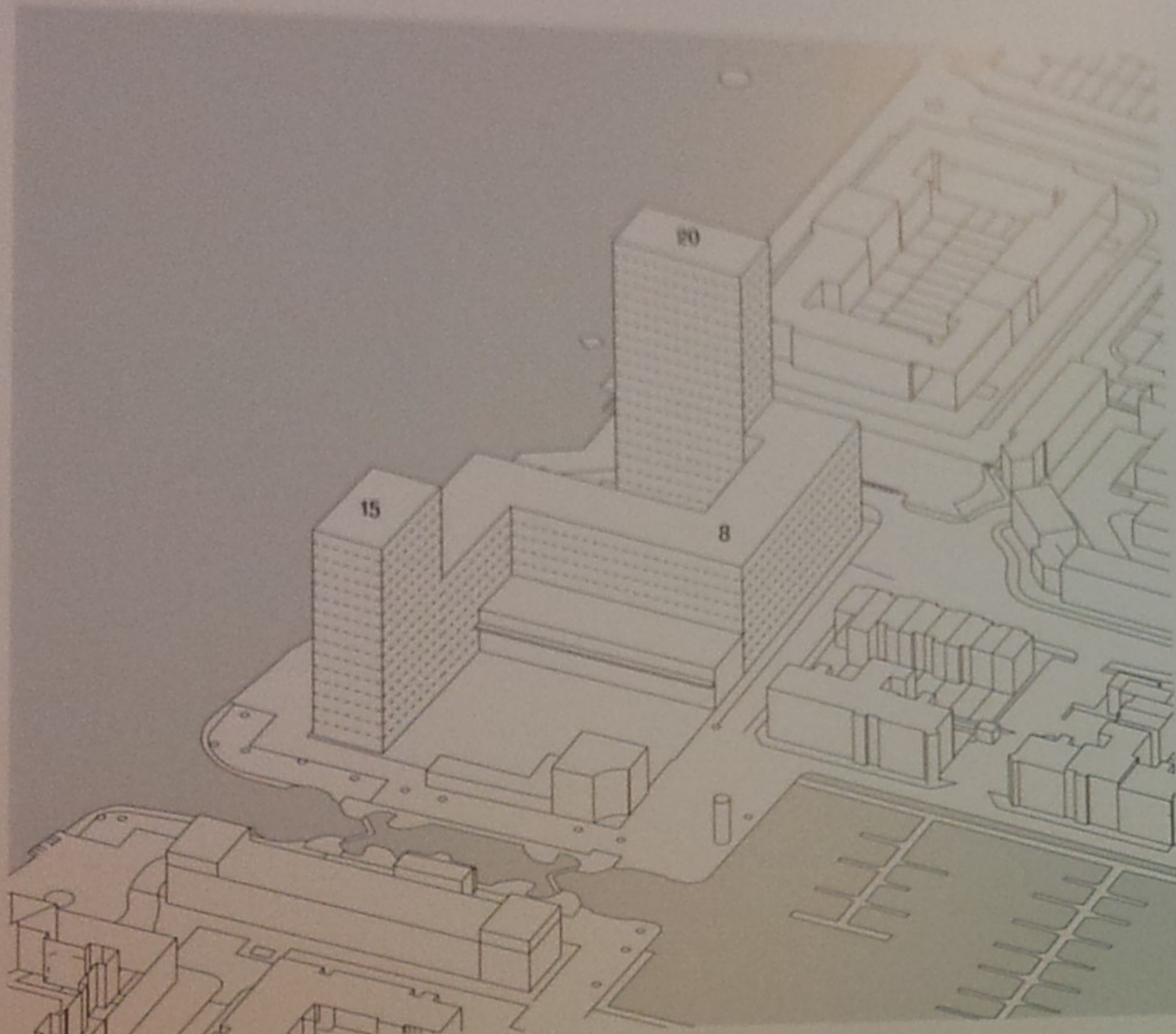
Have we got the amount of housing right?			
Have we got the tenure mix right?			
Is the mix of bedroom sizes ok?			
Have we got the parking provision right?			
Would you like to live in it or next to it?			
	AGREE	NEUTRAL	DISAGREE

We are keen to hear what you think. Please tell us more in the questionnaire provided

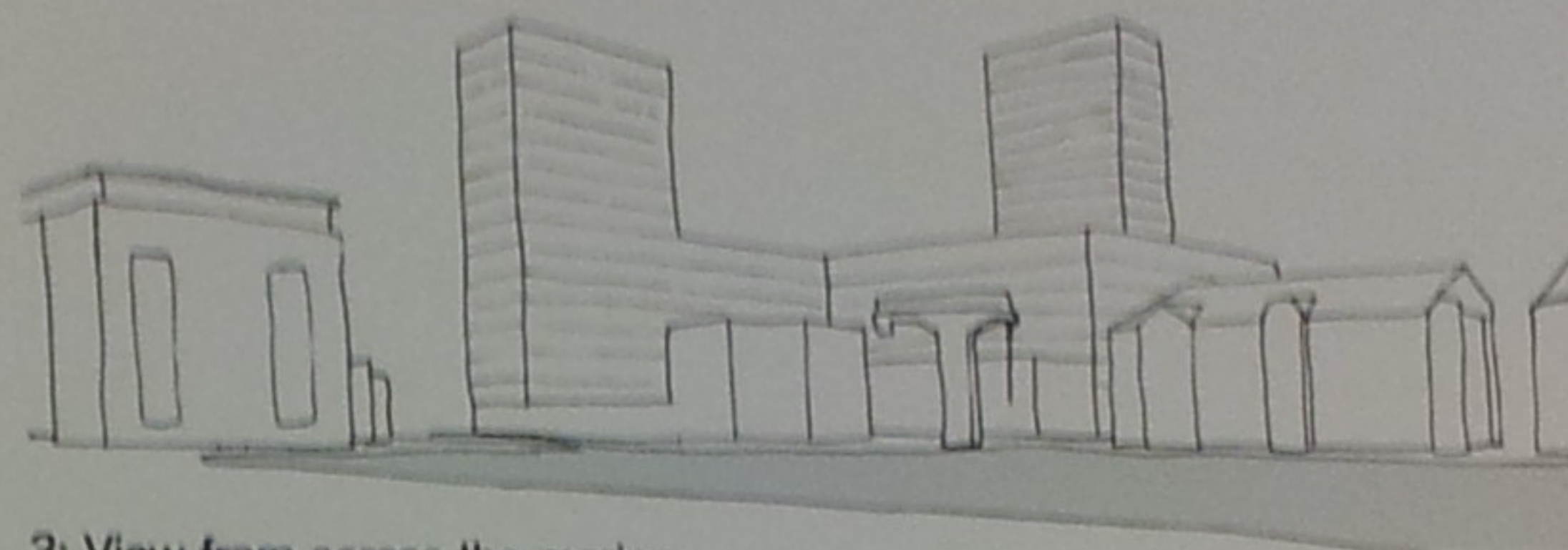




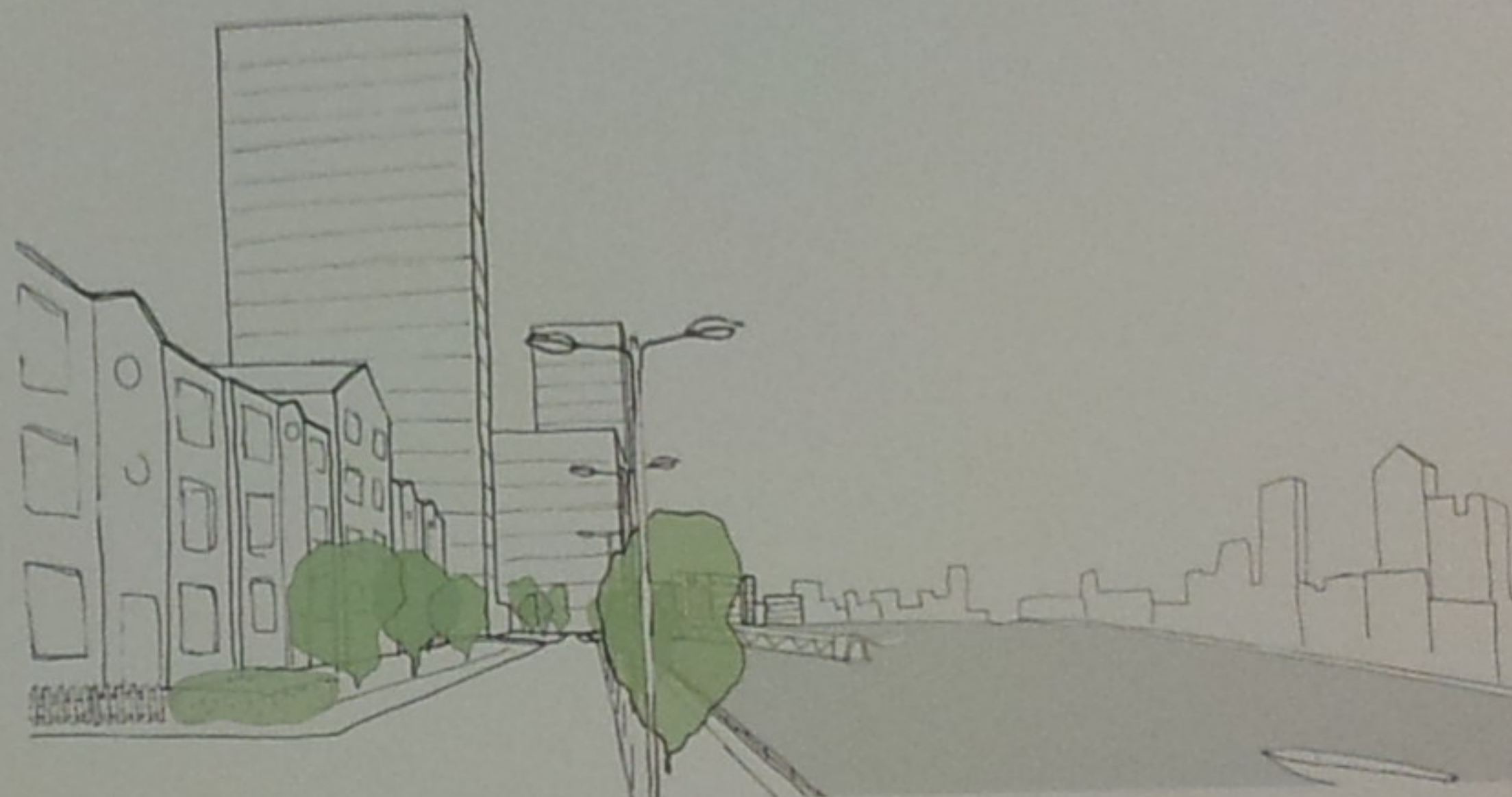
# Views and Daylight



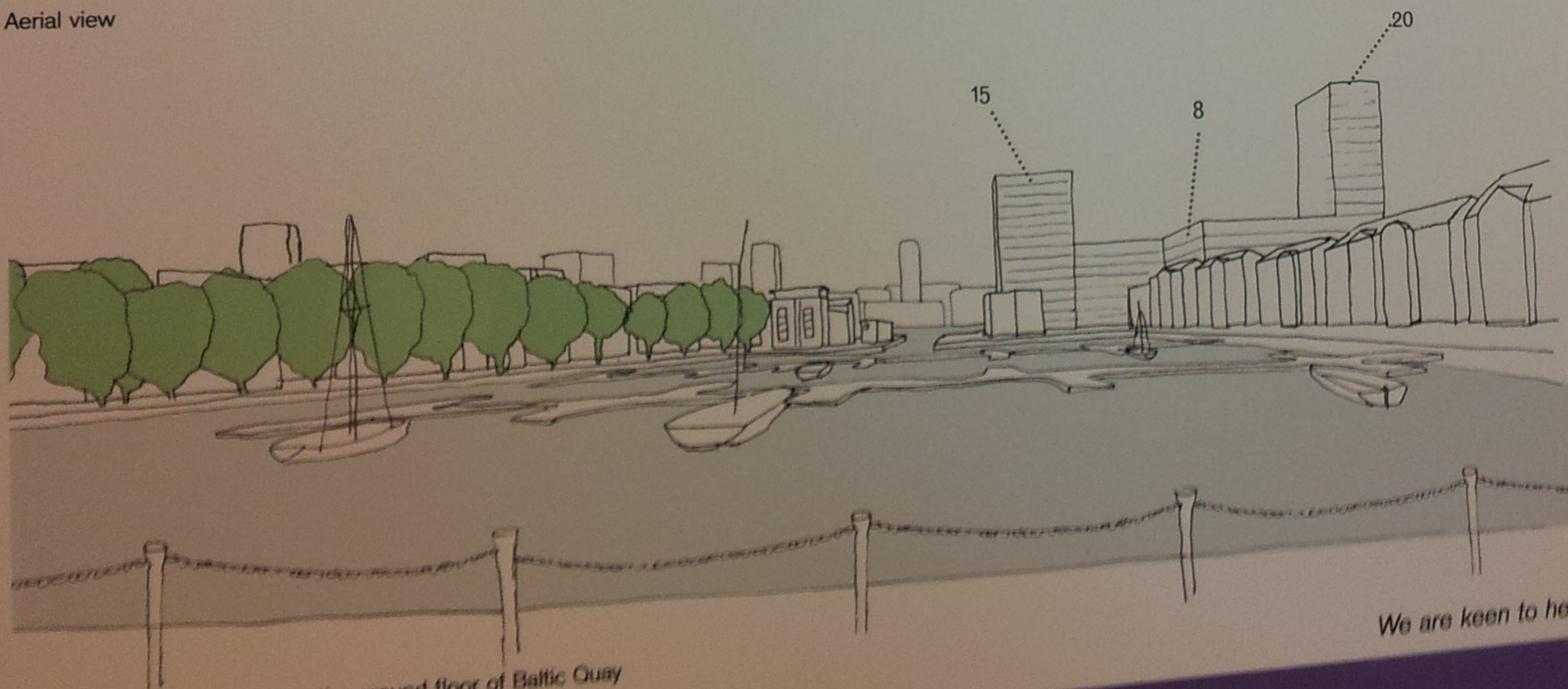
Aerial view



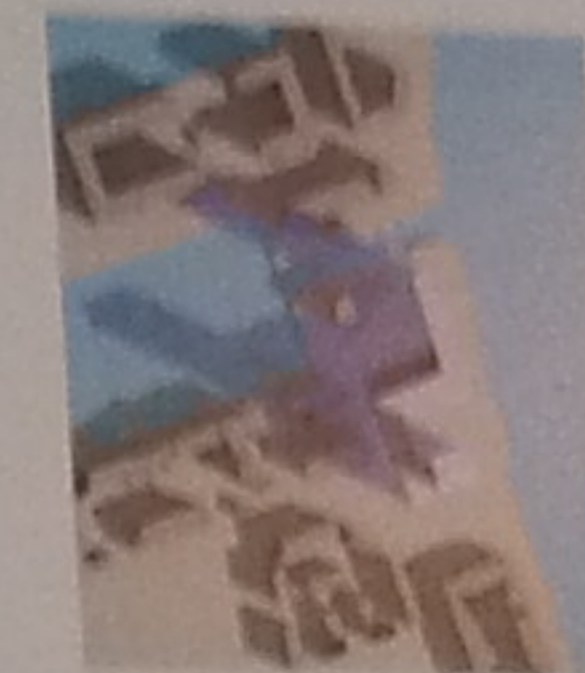
3: View from across the marina



4: View along the Thames Path



5: View of the proposal from the ground floor of Baltic Quay



8am



9am



10am



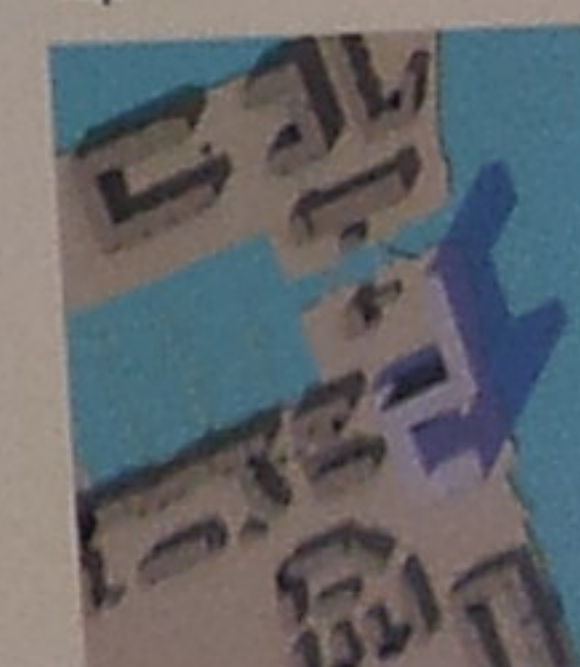
11am



12pm



1pm



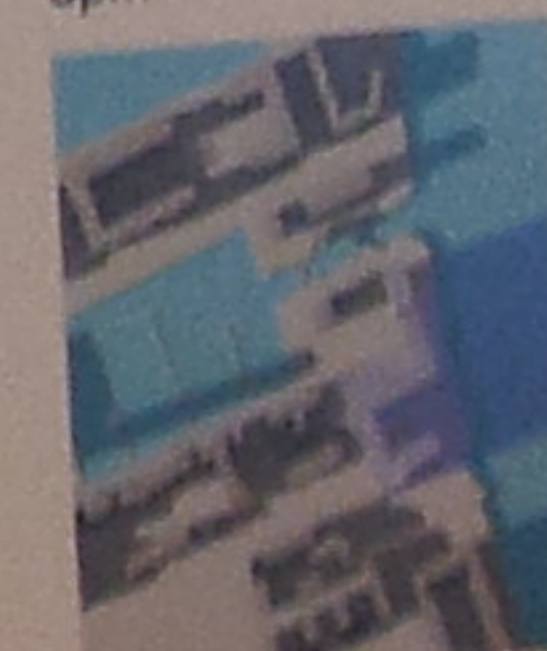
2pm



3pm



4pm



5pm

Shadow studies 21. March

We are keen to hear what you think. Please tell us more in the questionnaire provided!

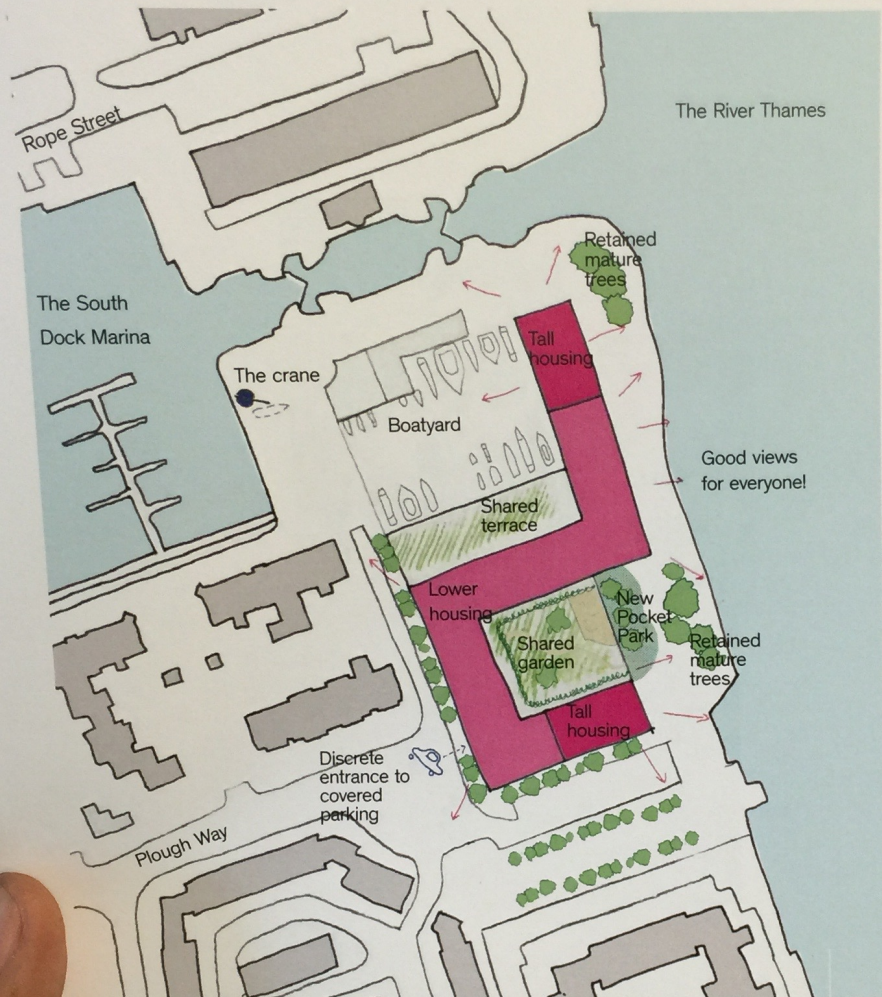
Southwark  
Council

Date: 29/07/2015

South Dock Marina



# Providing High Quality New Homes



① Roof Plan



Well designed flats with plenty of daylight and natural ventilation



Generous private external space

What we are proposing?

Potentially

- 213 new homes
- Equal mix of council, intermediate and private homes
- A mix of 1, 2, 3 & 4 bedroom flats
- Height ranging from 8 to 15 & 20 storeys
- Proportion of new homes will be for wheelchair users
- Covered parking for 20 to 25 cars.
- Provision of a car club.

What the new homes will be like?

- High architectural quality
- Built to Lifetime Homes Standards
- Low maintenance
- Highly insulated

The new homes will also have:

- Safe entrances
- Good views for everyone
- Private outdoor space
- Shared gardens
- Doorstep play.

## South Dock Marina

Adam Khan Architects + East + Levitt Bernstein



## St GEORGE'S WHARF- SOUTH DOCK MARINA CONSULTATION EVENT

Southwark Council is holding a consultation on

**WEDNESDAY 29<sup>th</sup> July 2015**

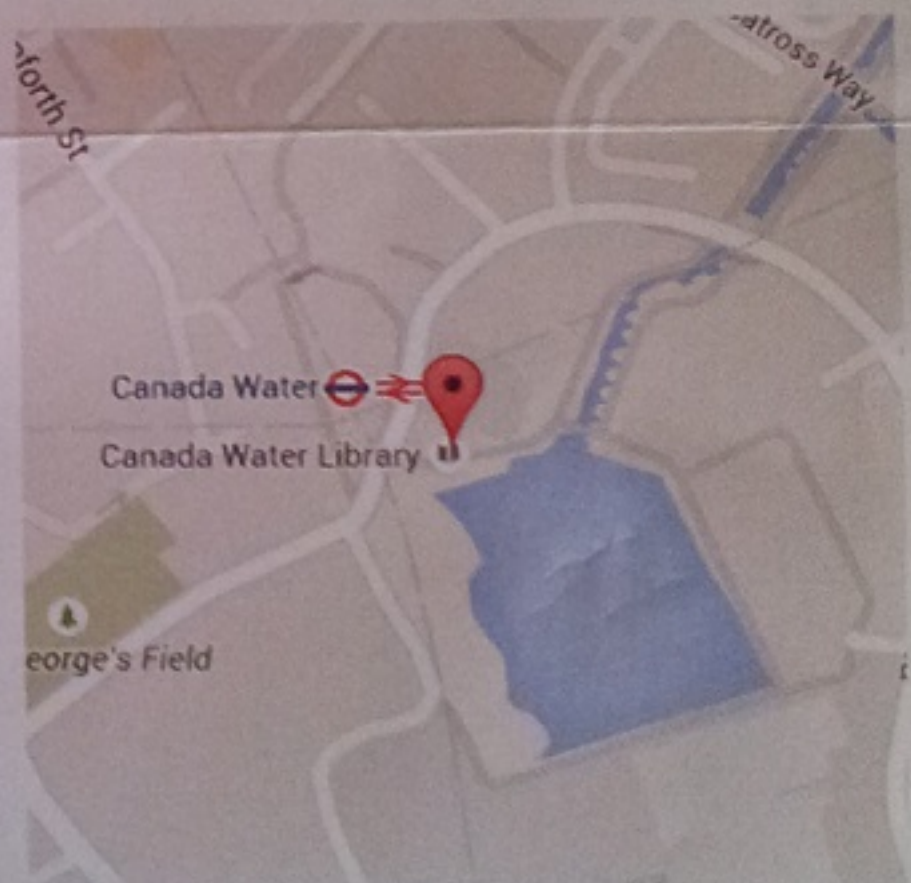
**5.00pm – 7.30pm**

**CANADA WATER LIBRARY, 21,  
SURREY QUAYS ROAD, LONDON, SE16 7AR**

### CANADA WATER LIBRARY

#### On the day:

- Learn about the Development Proposals
- Speak with the Team
- Leave your comments



- For more details or to pre-book a session, please contact:  
[housingregen@southwark.gov.uk](mailto:housingregen@southwark.gov.uk)